

# S-Drive Customer Pricing

FREE Shipping  
Worldwide

## 1. \$1,600 USD S-Drive Software Licence\*

The investment for the two year licence is \$1,600 USD (this payment can be paid over two consecutive days at \$800 per day. The order is not complete until the second payment has been received. The two year licence will auto-renew for FREE at the end of the two year period and for a further 2 years recurring, on the condition that the user continues to pay the monthly usage fee set out below.\*1 )

## 2. \$168 USD monthly Environmental Statements usage plan

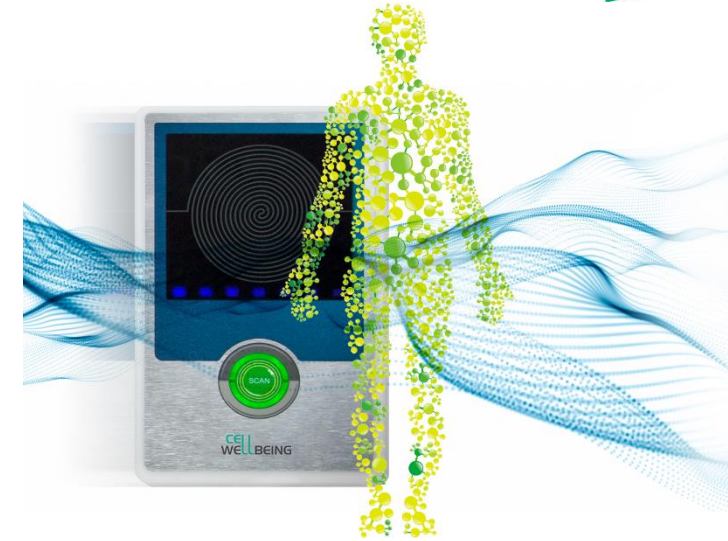
The monthly fee includes the pre-paid credits to complete an amount of Environmental Statements each month. The first monthly payment is taken with the S-Drive licence payment outlined above. The number of statements may vary according to territory and reflects the disposable income of end consumers in that territory. Please note the number of monthly statements that you are entitled to use when you complete your order online.

## 3. \$ 21-28 USD for Environmental Statement Top-Ups

At any time that you exceed your monthly usage plan you can buy top-ups directly through the website. These credits are added directly to your user account and can be accessed instantly for your use.

\* The software licence covers the current software, products and software updates available for use with the S-Drive but does not cover all future developments and new releases, which may require a further licence fee to access. This does not affect your current or future use of the S-Drive and statements but only products which have not yet been launched on the hardware and software platform.

\*1 – the monthly fee may vary from one two year period to another but NOT within the 2 year plan period.



Each new S-Drive customer will also be sent, FREE OF CHARGE, two 'Cell Water' Smart-Cards with a retail value of \$500 USD. (valid until 31.01.2015)

# S-Drive Customer Invite Program

Comprehensive  
Back-Office

## 1. \$500 USD S-Drive Rebate (Tier 1)

Each new customer invited by you who completes an S-Drive licence and Environmental Statement monthly usage plan purchase, entitles you to a \$500 single-time rebate. \*

## 2. \$4 USD Environmental Statement Rebate (Tier 1)

Each Environmental Statement purchased by your tier 1 qualified user entitles you to a \$4 rebate. This includes all monthly usage plan and top-up statements purchased by them. \*

## 3. \$100 USD S-Drive Rebate (Tier 2)

Each new customer invited by one of your tier 1 qualified customers, who completes an S-Drive licence and Environmental Statement monthly usage plan purchase, entitles you to a \$100 single-time rebate. \*

## 4. \$2 USD Environmental Statement Rebate (Tier 2)

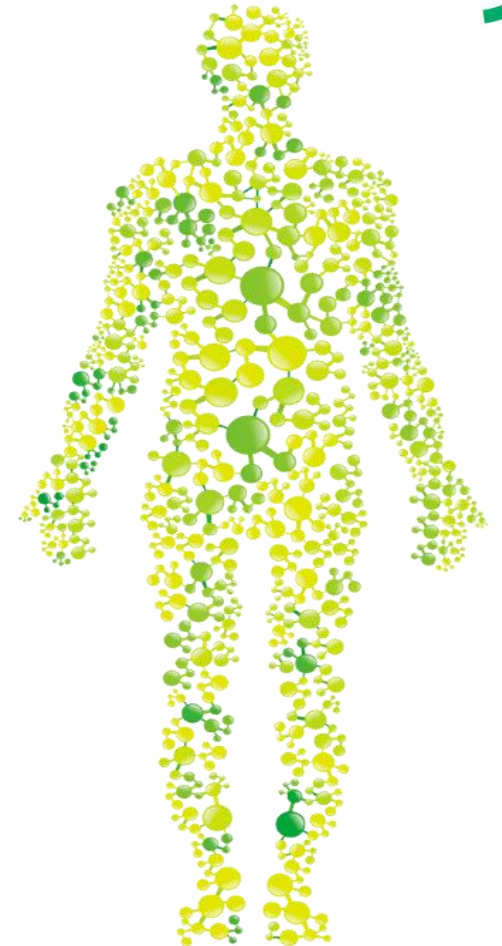
Each Environmental Statement purchased by your tier 2 qualified user entitles you to a \$2 rebate. This includes all monthly usage plan and top-up statements purchased by them. \*

### Payouts

Rebates are paid out twice monthly for the following periods

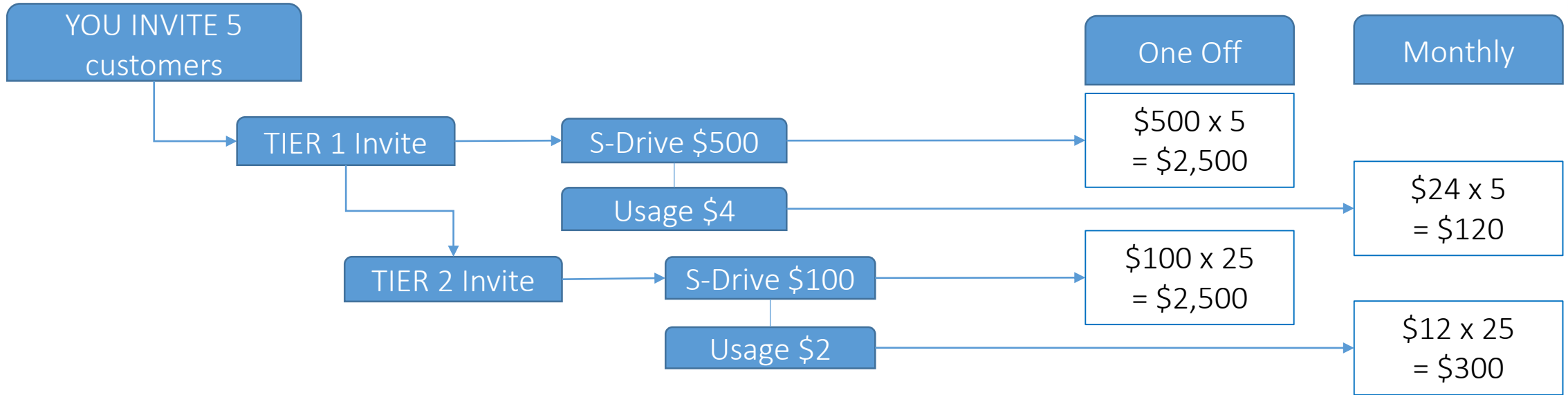
1. 29<sup>th</sup> of the previous month to the 14<sup>th</sup> of the current month (period 1)
2. 15<sup>th</sup> of the current month to the 28<sup>th</sup> of the current month (period 2)

\* You are only entitled to claim rebates listed above if you have an active and qualified customer account. If any of the your invited users fail to maintain an active customer account then you are not entitled to any rebates from that customer.



Comprehensive back-office  
for managing all of your customers, ordering, Q&A,  
tutorials, rebates and payouts

# Invited Sales – Examples of Income



## Some Examples of Income based on minimum usage\*

Based on you inviting 5 TIER 1 customers each whom invite 5 TIER 1 customers – who are your TIER 2 customers	\$5,000	+	\$420 per Month
Based on you inviting 10 TIER 1 customers each whom invite 5 TIER 1 customers – who are your TIER 2 customers	\$10,000	+	\$840 per Month
Based on you inviting 20 TIER 1 customers each whom invite 5 TIER 1 customers – who are your TIER 2 customers	\$20,000	+	\$1680 per Month

\* These are examples of income and not guarantees of achievable income if you decide to participate in our customer sales program.